

Big Data – Opportunité et risques

Security for a Smarter Planet

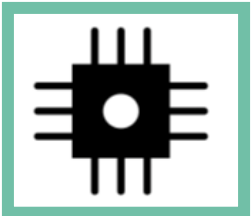


Michel Bobillier
Global Sales Leader, IBM Security Solutions
November 6th, 2012

Today's Discussion Topics

- Big Data
- Smarter Planet
- Security impact
- The implications - Security “New Normal”





Revenue 2011: \$107B (+7%). Profit \$15.8B +7%)

427'000 employees in 170 countries

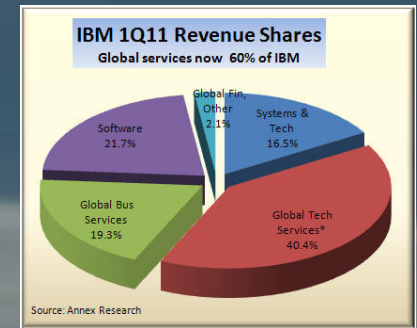


M → S : Software, Services (>80%)

Acquisitions

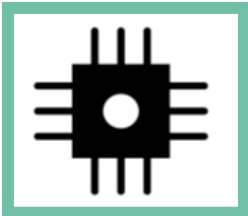


Smarter Planet, Business Analytics, Cloud computing





“Big Data” Buzz Word or Revolution?



Memory cheaper than paper

5 EB created every 2 days (Google' CEO)



Equal to mankind created data till 2003

Machine generated, duplicate, unstructured

Augmented Reality to Duplicated Reality

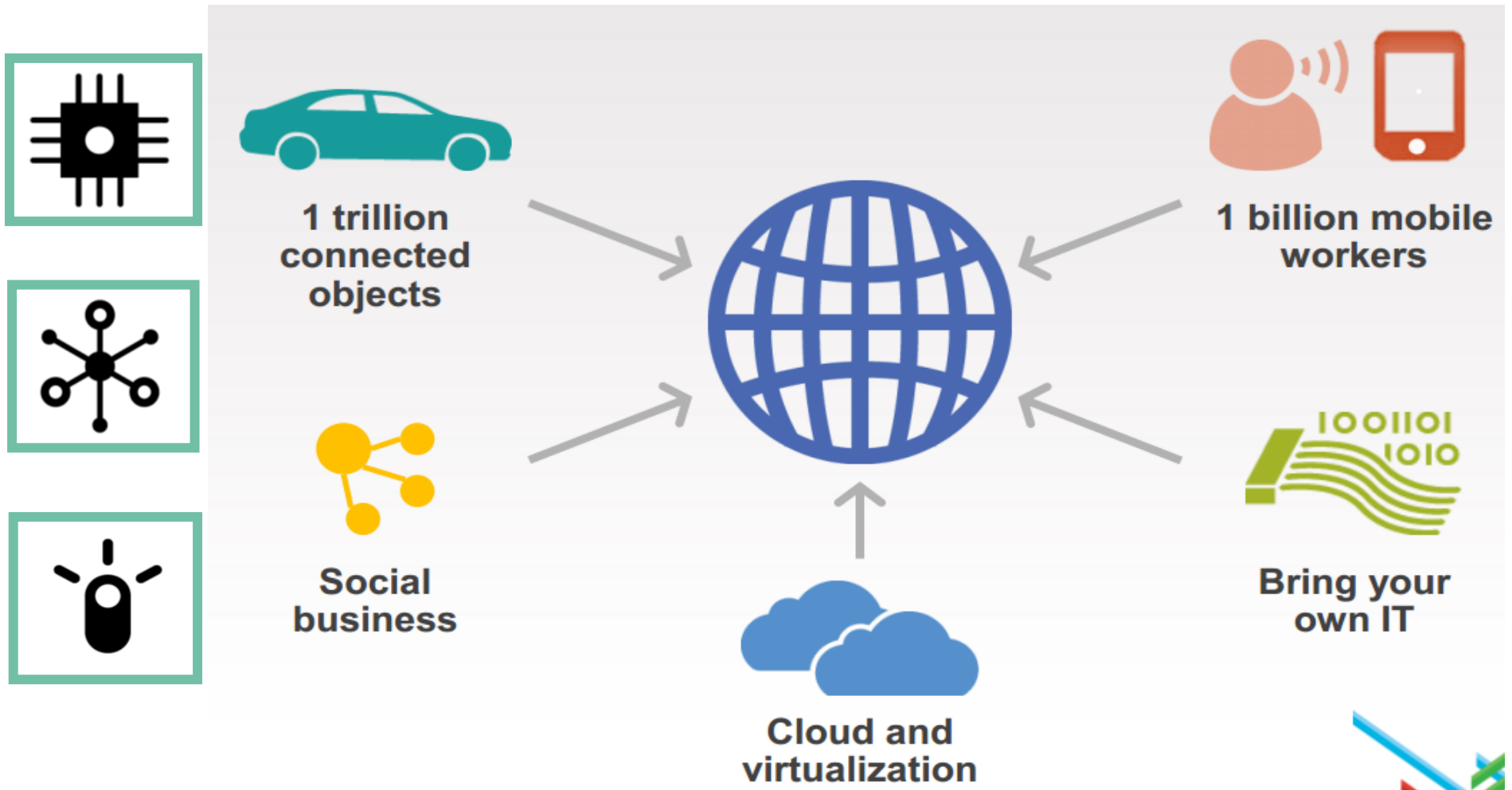


TB, PB, EB, ZB, YB ...

Gold mine ...

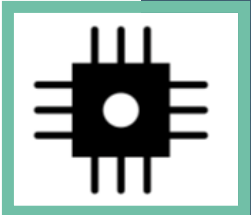
... and a security risk

Innovative technology changes everything Better, Faster, Cheaper





The Smarter Planet



Our world is getting
Instrumented



Our world is getting
Interconnected



Our world is getting
Intelligent



The Planet is getting more...

Smart Supply Chains



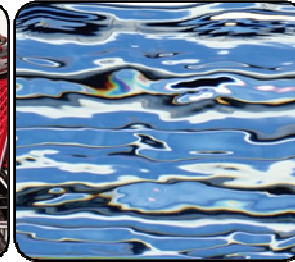
Smart Countries



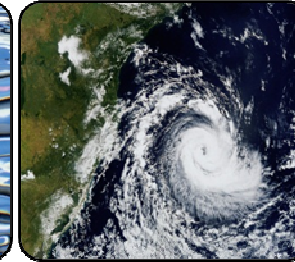
Smart Retail



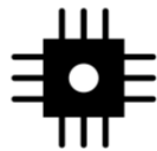
Smart Water Management



Smart Weather



Smart Energy Grids



INSTRUMENTED



INTERCONNECTED

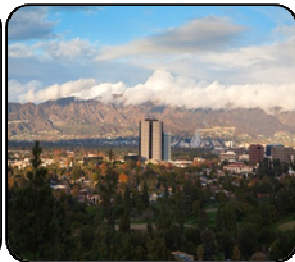


INTELLIGENT

Smart Oil Field Technologies



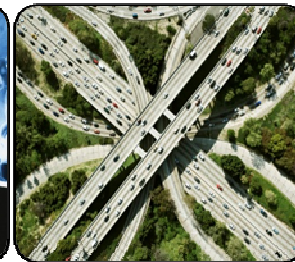
Smart Regions



Smart Healthcare



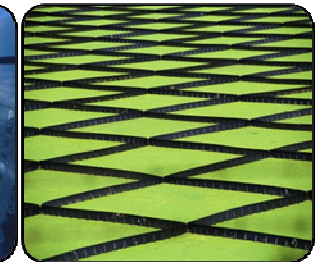
Smart Traffic Systems



Smart Cities



Smart Food Systems



It isn't just because we can. It is because we must.

An aerial photograph of a busy city street. A white bus with green accents and the number 1455 is stopped at a crosswalk. Several cars are also stopped at the crosswalk. Pedestrians are visible on the sidewalk. The background shows a dense urban environment with buildings and more cars on the road.

In a typical city, driving around for **parking in one year** generates the equivalent of **38 trips around the world**, burns 180,000 liters of gas, emitted 730 tons of carbon dioxide.

Congested roadways cost \$160 billion real annually in the form of 4.2 billion lost hours and 11 billion liters of wasted gas.



A typical **carrot has traveled 2,500 km**, a potato 1,900 km, a chuck roast 1,000 km...

...grocers and consumers throw away \$74.4 billion real worth of food every year.

Just think about it ...

Business moves to mobility



Turn information into insights

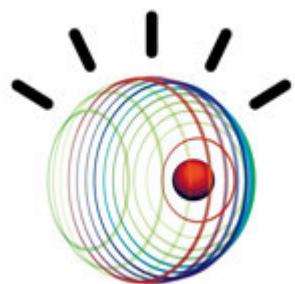


Drive enterprises' effectiveness and efficiency



Connect and empower people





What is the risk?

DATA EXPLOSION

Protection of sensitive and large volumes of data, shared globally

ENDPOINTS

Protection of sensors & actuators in the wild

ATTACK SOPHISTICATION

Addressing the new cyber threat landscape

CLOUD

Adoption of virtualization and cloud computing

COMPLIANCE

Addressing compliance complexity

PRIVACY

Expectation of privacy

Motivations and sophistication are rapidly evolving

Flame

National Security



Nation-state actors
Stuxnet

Espionage, Activism



Competitors and Hacktivists
Aurora

Monetary Gain



Organized crime
Zeus

Revenge, Curiosity



Insiders and Script-kiddies
Code Red



Techniques, tools, and targets are also increasing



In 2011 there was an

80%

increase in phishing attacks, many of which impersonate social networking sites.



In 2011 there was a

19%

increase in the number of tools released publicly that can be used to attack mobile devices.

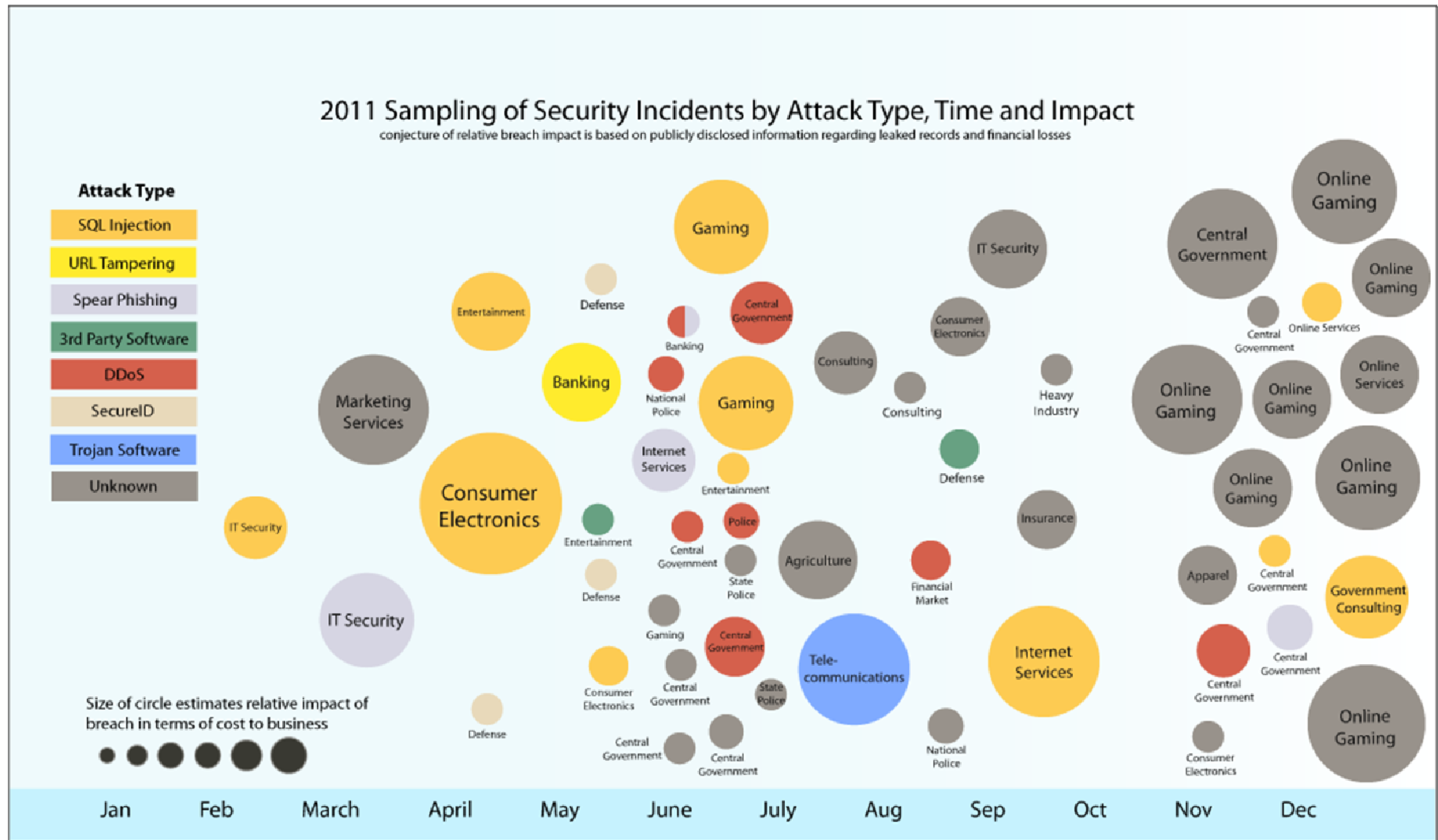
So far in 2012, IBM reports over



4,400

new security **vulnerabilities.**

2011: Year of the Targeted Attack



Source: IBM X-Force® Research 2011 Trend and Risk Report

Global coverage brings expertise and detailed security awareness



IBM Research

IBM Institute for Advanced Security

Enabling cybersecurity innovation and collaboration



14B analyzed Web pages & images

40M spam & phishing attacks

54K documented vulnerabilities

Billions of intrusion attempts daily

Millions of unique malware samples



World Wide Managed Security Services Coverage

- 20,000+ devices under contract
- 3,700+ MSS clients worldwide
- 13B+ events managed per day
- 1,000+ security patents
- 133 monitored countries (MSS)

What are we seeing? Key Findings from the 2012 Trend Report

Progress in Internet Security

- Significant decrease of PDF vulnerabilities
- Fewer exploit releases
- Better patching

But...

New Attack Activity

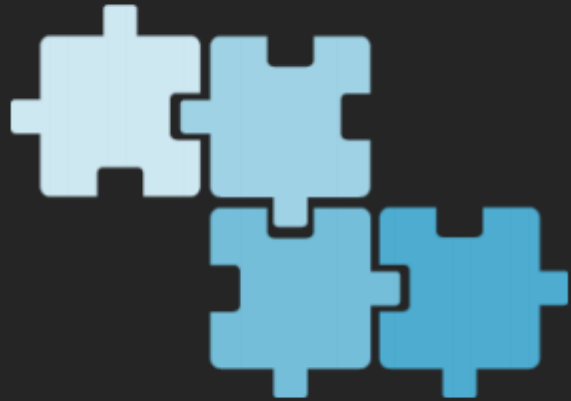
- MAC APT and Java exploits surface
- Password leaks raise renewed awareness
- SQL injection most preferred attack type
- XSS tops at 51% of all web app vulnerabilities

The Challenge of Mobile BYOD

- Patching of mobile devices a real challenge
- CISOs say mobile security is greatest near-term technology concern

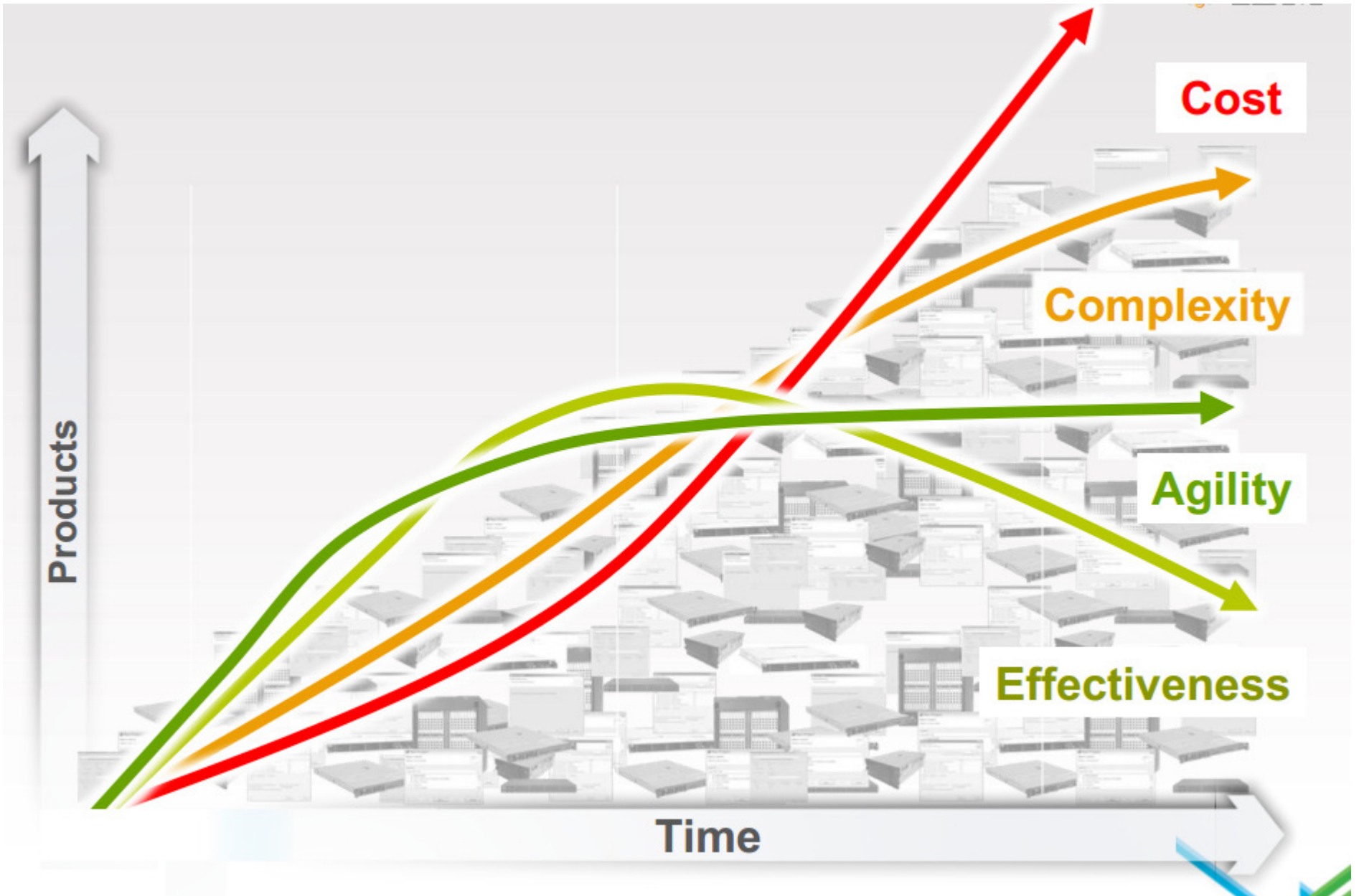
Download the report: <http://www.ibm.com/security/xforce>



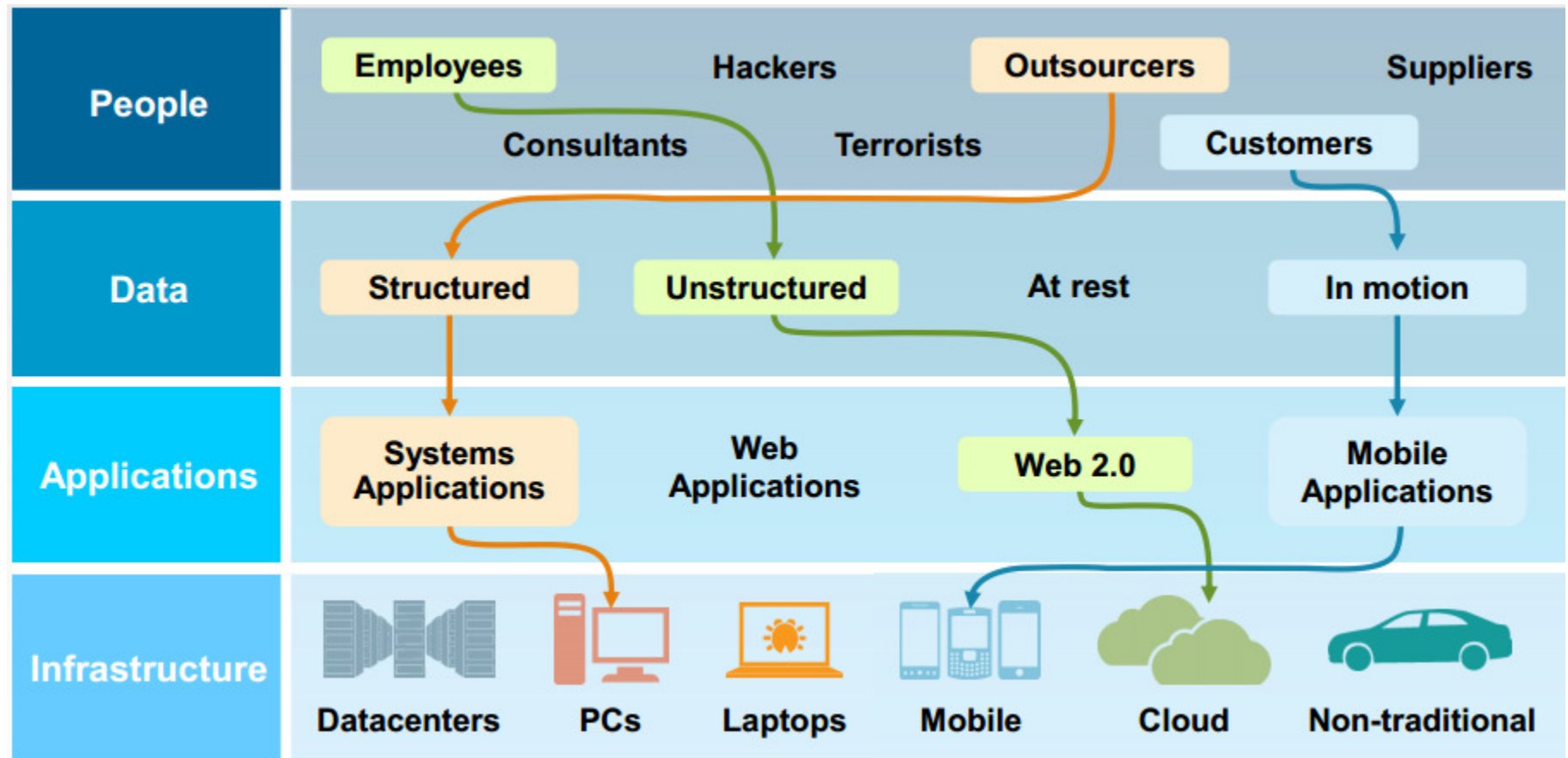


**How do we
solve this?**





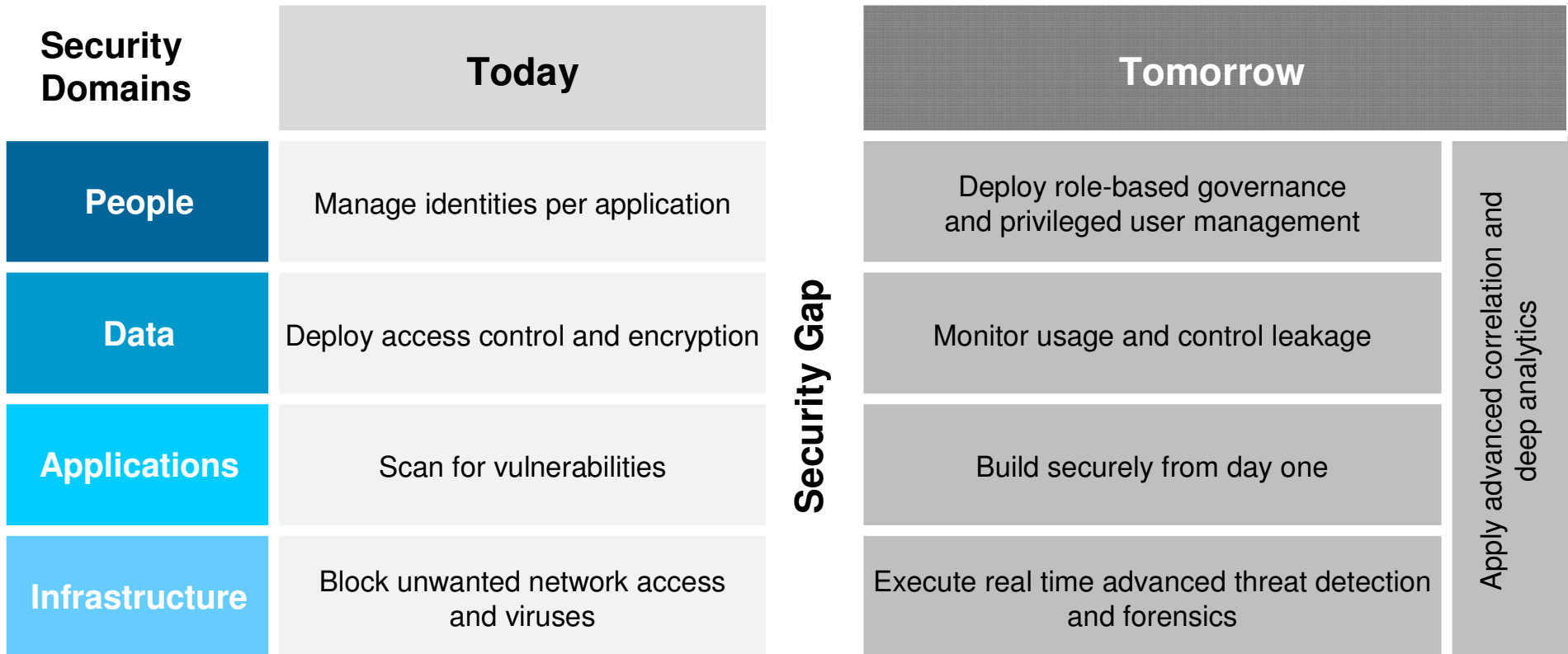
The attack surface is growing exponentially



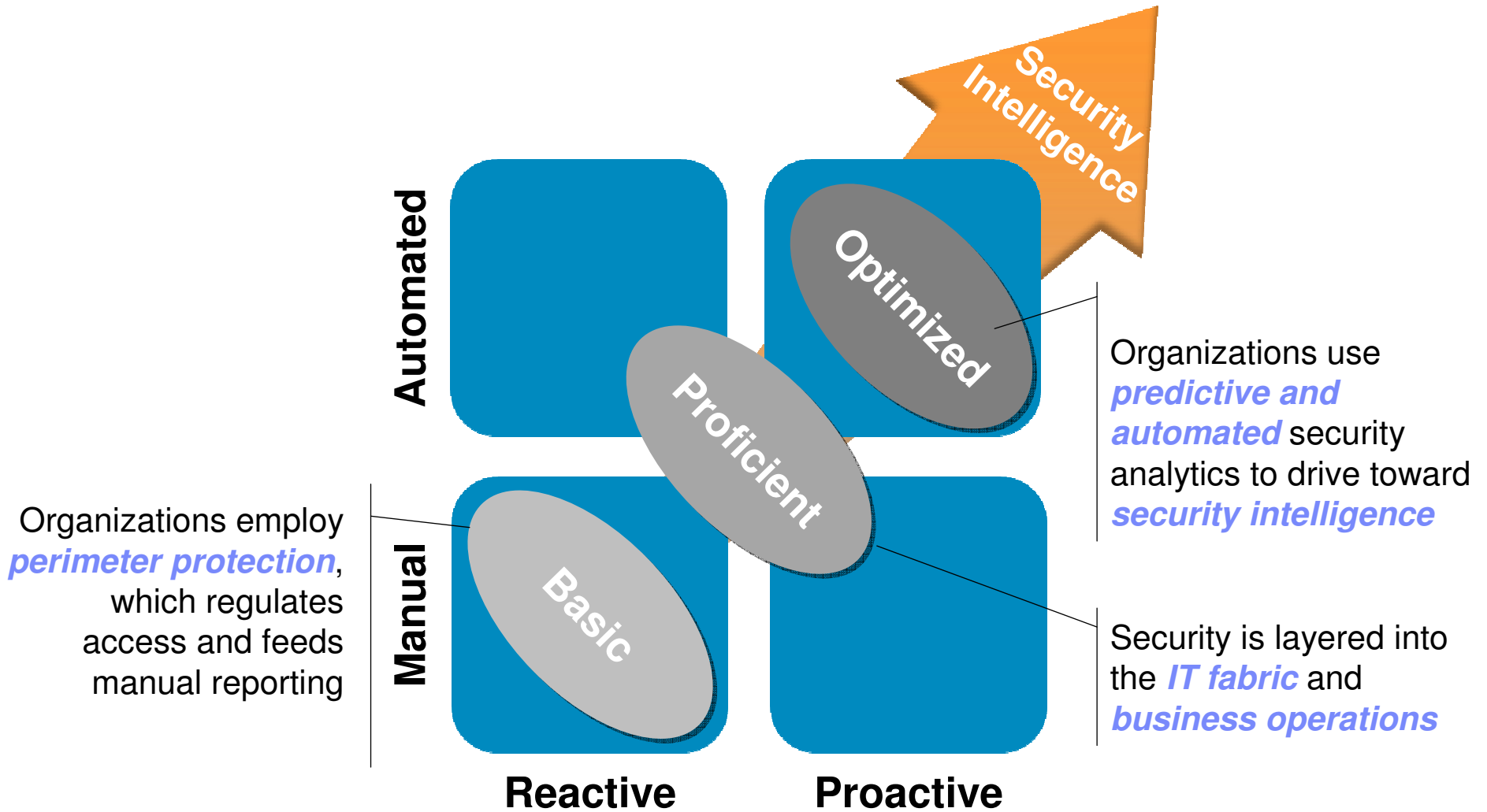
77% of firms feel cyber-attacks harder to detect and 34% low confidence to prevent

IBM Security Point Of View : shift from point product to integrated enterprise defense

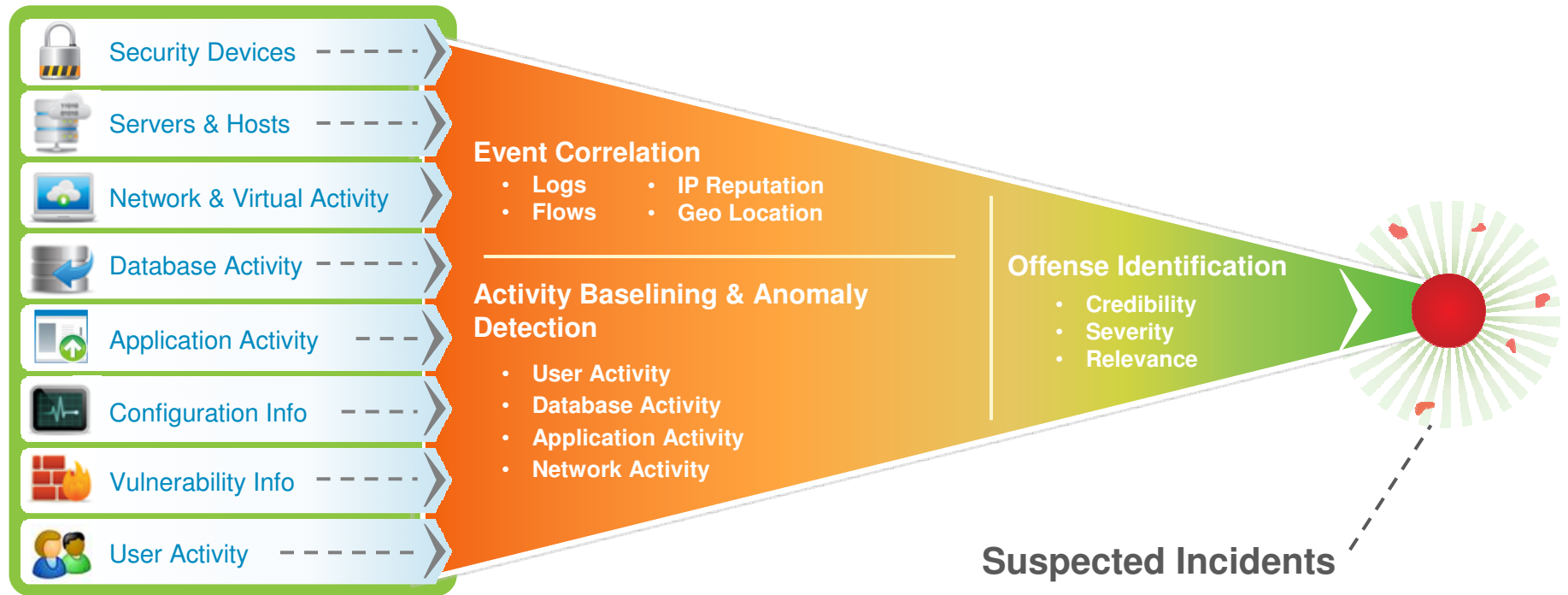
Security will shift from a point product approach to an integrated enterprise approach, based on key foundational elements that allow for **active management, real time information, analytical correlation, and predictive threat management**



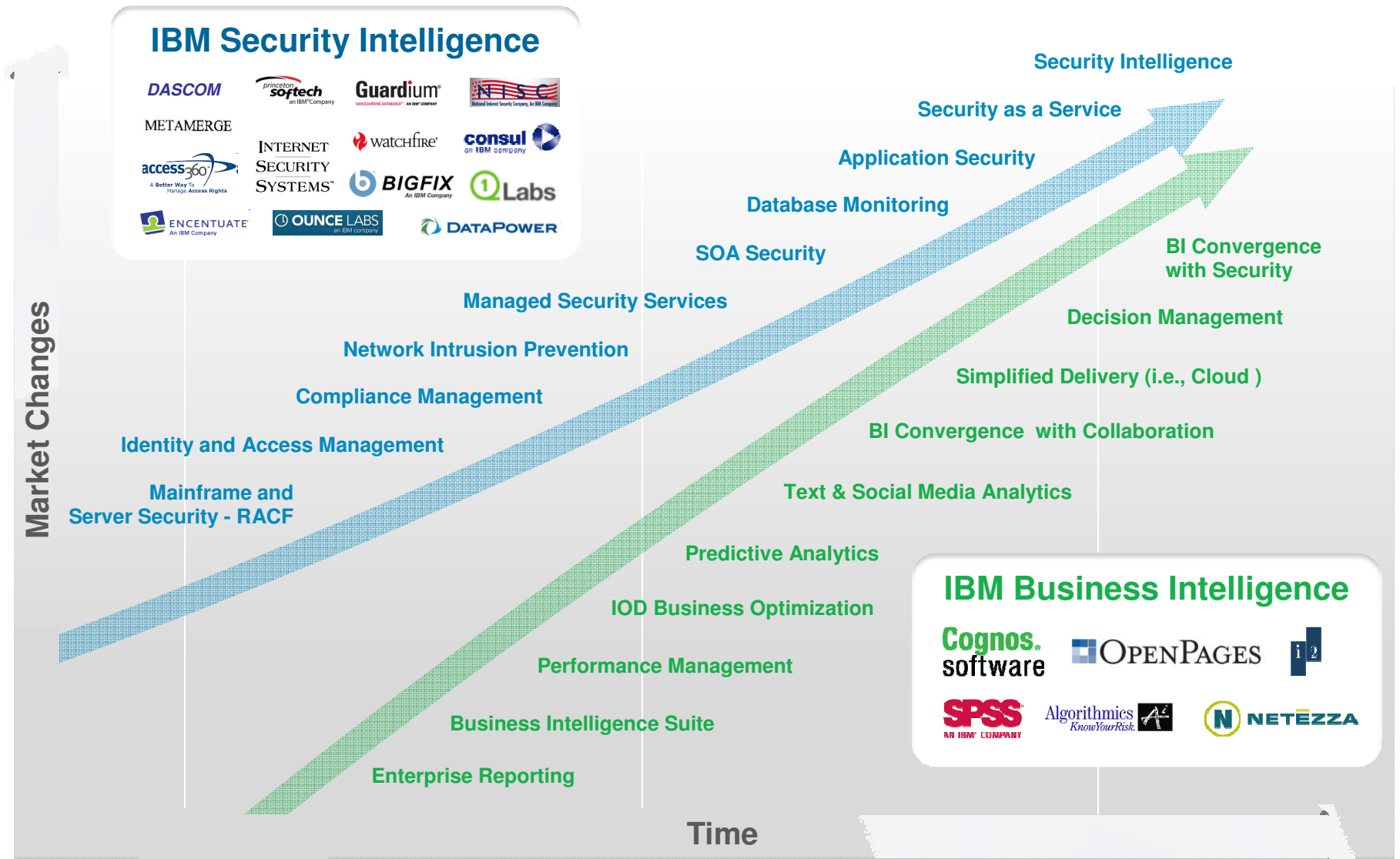
A “New Normal” led by Security Intelligence



Full Visibility and Actionable Insight for Total Security Intelligence



Security and Business Intelligence offer insightful parallels



Security Intelligence

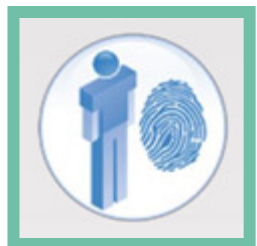


From

- Log collection and signature based detection

To

- Real Time Monitoring
- Context-aware anomaly detection
- Automated correlation and analytics



Integration of the IBM Security Framework provide incremental security value



Integrated Intelligence



Monitor Everything

Integrated Research



Consume Threat Intelligence

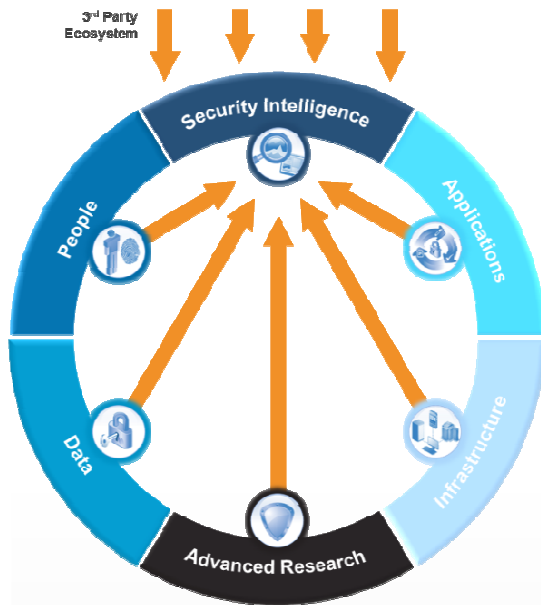
Integrated Protection



Integrate Across Domains

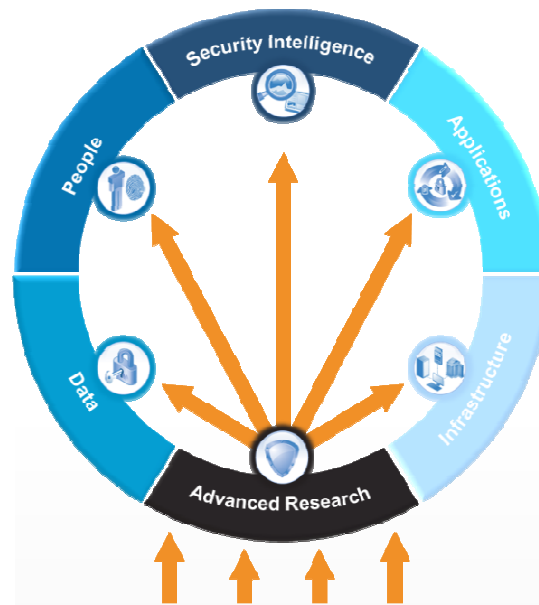
Integration: Increase security, collapse silos, and reduce complexity

Integrated Intelligence.



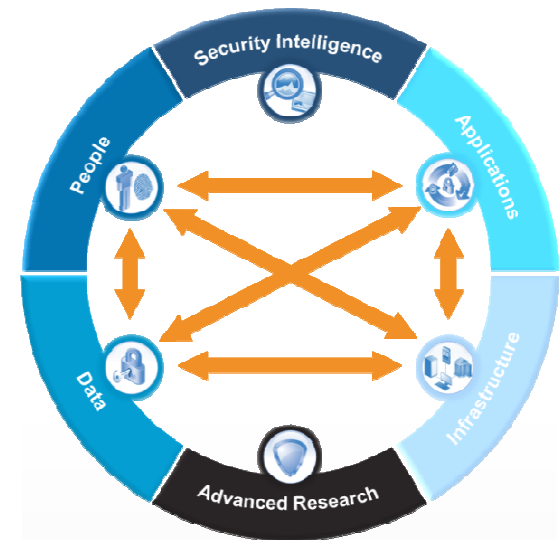
- Consolidate and correlate siloed information from hundreds of sources
- Designed to detect, notify and respond to threats missed by other security solutions
- Automate compliance tasks and assess risks

Integrated Research.



- Stay ahead of the changing threat landscape
- Designed to detect the latest vulnerabilities, exploits and malware
- Add security intelligence to non-intelligent systems

Integrated Protection.



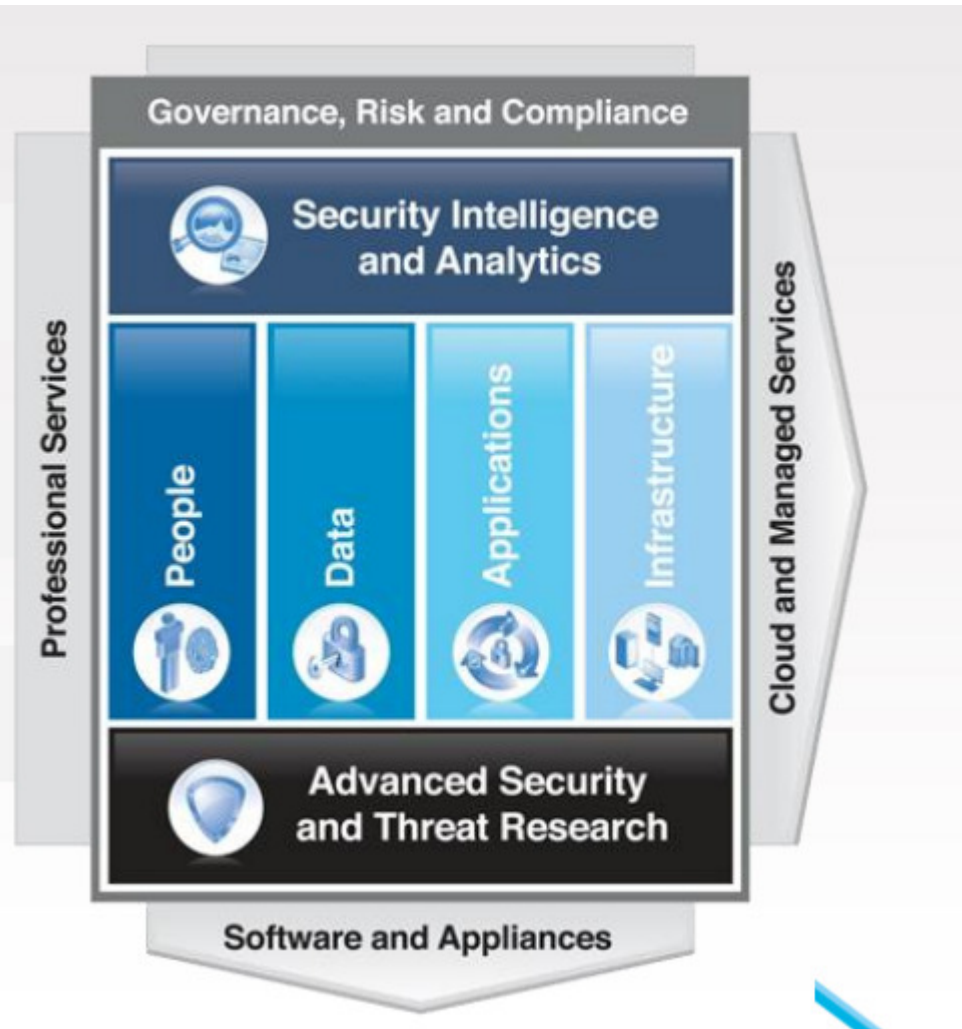
- Customize protection capabilities to block specific vulnerabilities using scan results
- Converge access management with web service gateways
- Link identity information with database security

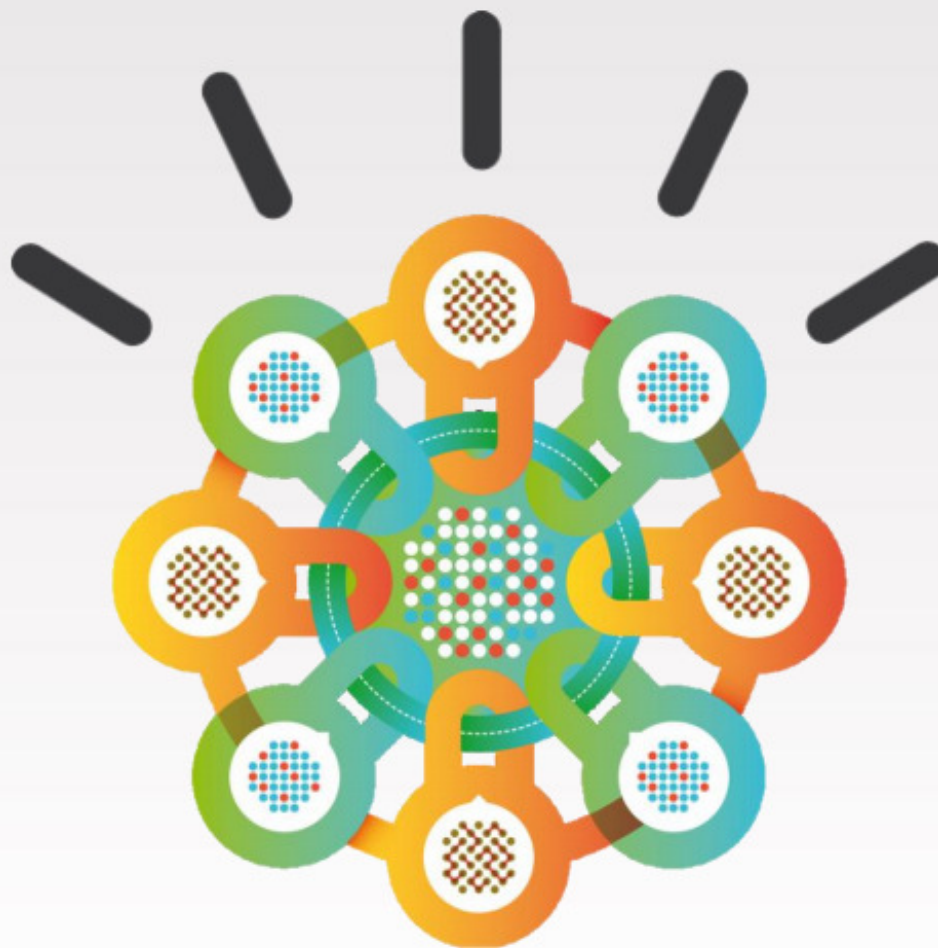
Security Intelligence delivered through a comprehensive framework

Intelligence

Integration

Expertise





Security Intelligence





Michel Bobillier
bobillier@ch.ibm.com
+41 58 333 4066